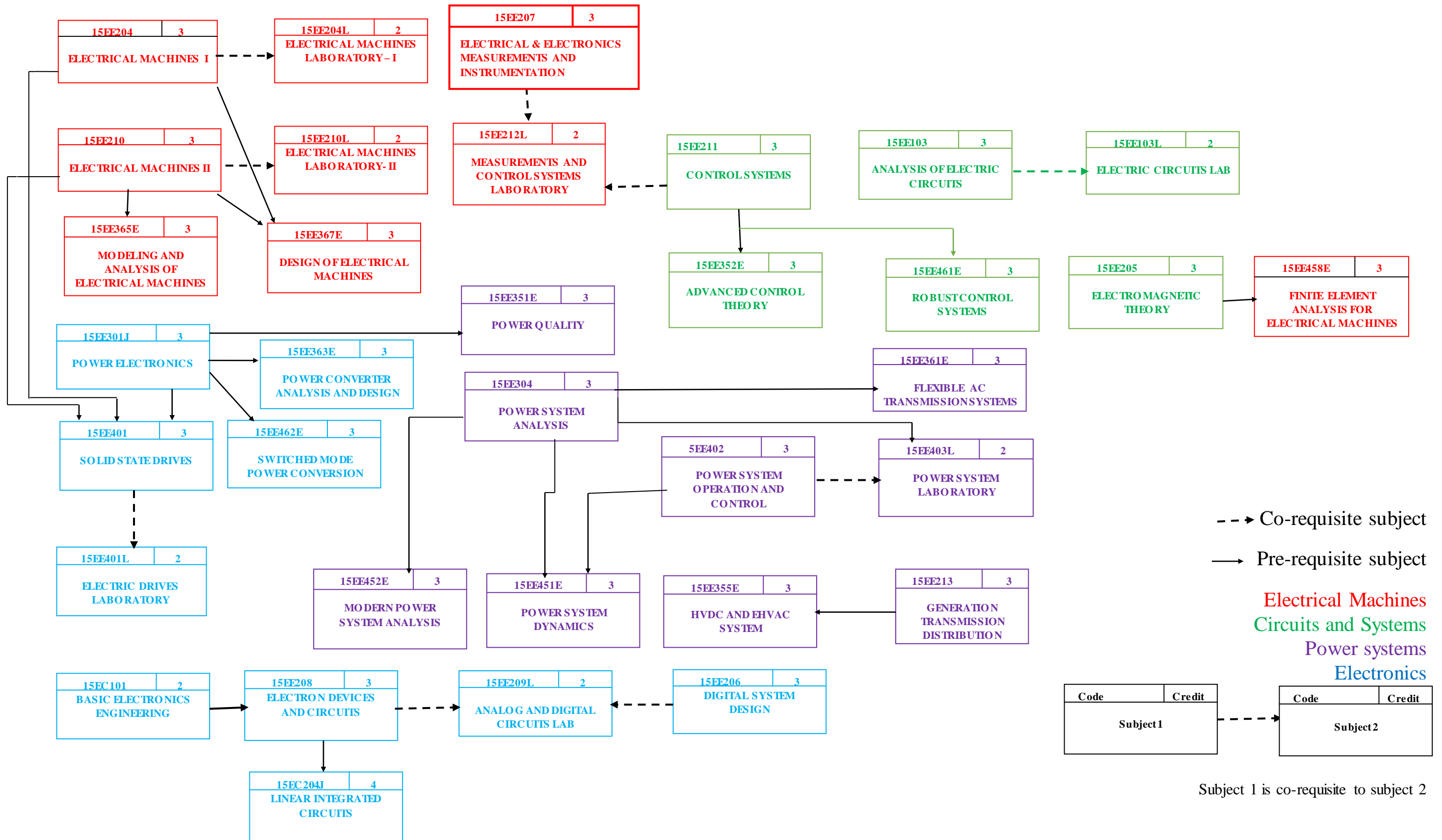


Faculty of Engineering and Technology
Department of Electrical and Electronics Engineering
B.Tech EEE Curriculum 2015-16, Pre-requisites and Co-requisites flowchart



Department of Electrical and Electronics Engineering			
B. Tech Electrical and Electronics Engineering			
Course Code	Course Title	Prerequisite course	Co requisite courses
15EE103L	ELECTRIC CIRCUIT LABORATORY		15EE103
15EE204L	ELECTRICAL MACHINES LABORATORY – I		15EE204
15EE208	ELECTRON DEVICES AND CIRCUITS	15EC101	
15EC204J	LINEAR INTEGRATED CIRCUITS	15EE208	
15EE209L	ANALOG AND DIGITAL CIRCUITS LAB		15EE208,15EE206
15EE210L	ELECTRICAL MACHINES LABORATORY- II		15EE210
15EE212L	MEASUREMENTS AND CONTROL SYSTEMS LABORATORY		15EE207,15EE211
15EE352E	ADVANCED CONTROL THEORY	15EE211	
15EE355E	HVDC AND EHVAC SYSTEM	15EE213	
15EE361E	FLEXIBLE AC TRANSMISSION SYSTEMS	15EE304	
15EE363E	POWER CONVERTER ANALYSIS AND DESIGN	15EE301J	
15EE365E	MODELING AND ANALYSIS OF ELECTRICAL MACHINES	15EE210	
15EE367E	DESIGN OF ELECTRICAL MACHINES	15EE204,15EE210	
15EE401L	ELECTRIC DRIVES LABORATORY		15EE401
15EE401	SOLID STATE DRIVES	15EE204, 15EE210, 15EE301J	
15EE403L	POWER SYSTEMS LABORATORY	15EE304	15EE402
15EE451E	POWER SYSTEM DYNAMICS	15EE304,15EE402	
15EE452E	MODERN POWER SYSTEM ANALYSIS	15EE304	
15EE458E	FINITE ELEMENT ANALYSIS FOR ELECTRICAL MACHINES	15EE205	
15EE461E	ROBUST CONTROL SYSTEMS	15EE211	
15EE462E	SWITCHED MODE POWER CONVERSION	15EE301J	
15EE351E	POWER QUALITY	15EE301J	