



SHIVAN TEMPLE, VEDAL

group 09

heritage documentation ROOHI AFREEN | LOHITH ROY | ROSHEL LAL | JEEVA KARTHICK

MAP CONTEXT



Chengalpattu



vedal

vedal lake



vedal

shivan temple

The Chengalpattu is located near to the industrial and IT hub. It is the headquarters of the district and is 56 kilometres (35 mi) away from the state capital, Chennai.

Vedal, is a village in the Cheyyur taluk of the Chengalpattu district of Tamil Nadu, India. It is located 105 kilometres (65 mi) away from Chennai and 45 kilometres (28 mi) away from Pondicherry on the Tamil Nadu East Coast Road ECR. Vedal is situated about 10 kilometres (6.2 mi) far from the Bay of Bengal coast.

vedal in which the shivan temple is located. It is near the vedal lake .the shivan temple is well known in vedal.it a famous temple,which was built by raja raja chola

**NAME OF THE BUILDING -**

SRI VADAVAMUGA AGNEESWARAR TEMPLE

**LOCATION -**

VEDAL

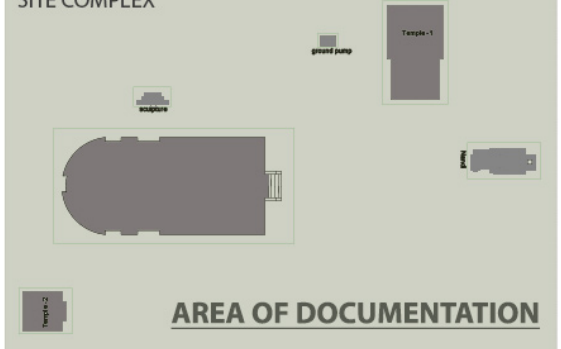
**YEAR OF CONSTRUCTION-**

RAJA RAJA CHOLA PERIOD (9TH CENTURY)

**ARCHITECTURAL STYLE-**

GAJABRASHTA ARCHITECTURAL STYLE

SITE COMPLEX



**MYTHOLOGICAL STORY**

Just before the day the new idol was to be placed in the sanctum sanctorum in place of the old one, the King had a dream. The Goddess came to him in the form of a middle aged woman, and asked him " Will you send your mother away if she became disabled?". The startled king woke up, and at dawn, ordered that the new idol must be placed without removing the old idol. So till date, we have two Vasantanayakis in the same sanctum sanctorum, waiting to calm the nerves of their devotees and offer whatever they come seeking for.



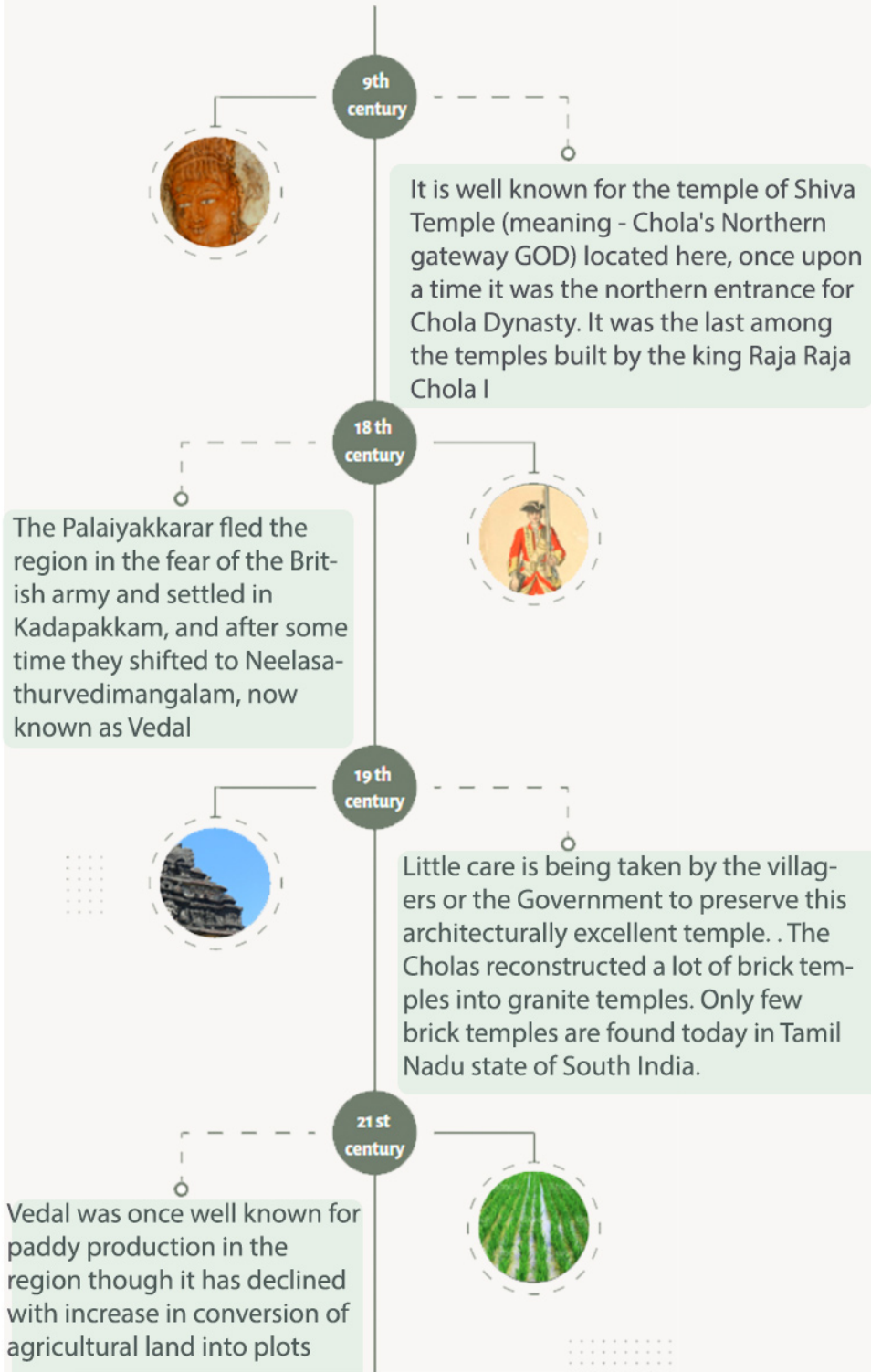


**SHIVAN TEMPLE**

group 09

heritage documentation ROOHI AFREEN | LOHITH ROY | ROSHEL LAL | JEEVA KARTHICK

**HISTORY-TIMELINE**



**LOCAL CONTEXT**



Vedal lake is the second largest lake in the Kanchipuram District after the Madhuranthakam lake, with a span of 716 acres (3.9 km) and Vedal lake had been recently renovated under Tamil Nadu lake Rehabilitation project at a cost of seventy five lakhs to enhance agriculture and ground water level.

About half of vedal's cultivatable land depends on this lake water, also ground water is keenly kept high because of this water.

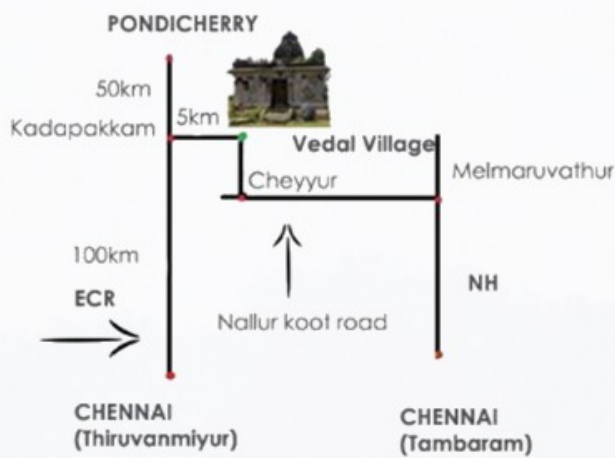
**SURROUNDING CONTEXT**



The surroundings have schools Government High School, residential zone, and many plots and paddy field



# PERFORMANCE



Vedal (Veedeal) The Temple built by Raja Raja Chola 1. The temple is also known as Neelasathurvedimangalam or Veera Chozha Sathurvedimangalam a village in the Cheyyur taluk. Kanchipuram district of TamilNadu, India, it is located 105 kilometres (65 mil) away from Chennai and 45 kilometres (28 mil) away from Pondicherry.



Temple Complex

## USER BEHAVIOUR



"I was bought up here in Vedal. The deity here is very powerful. He is looking after the village. We all collected a sum of around 2lakh for renovation of nearby temple block. The main temple hasn't been modified here because it is a historical landmark. Some of the parts have been destroyed due to natural hindrances, tsunami and the course of time. Lime stone, mud and stone has been used in the construction. We celebrate Deewali, Siva Pooja, Karthikadepam just like Thiruvannamalai temple by lighting Diyas"



Stone Inscriptions



SCALE : 1:100  
 ALL DRAWINGS ARE IN MM UNLESS MENTIONED

## ACCESSIBILITY



SHIVAN TEMPLE, VEDAL

group 09

heritage documentation ROOHI AFREEN | ROSHEL LAL | LOHITH ROY | JEEVA KARTHICK

# PERFORMANCE

## WEATHER

The climate in Vedal region is basically semi-arid tropical.

### Temperature

Day: 37°C  
 Night: 27°C

Maximum record: 44°C  
 Minimum record: 22°C

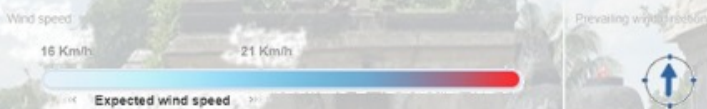
**Humidity**  
 67%

### Wind

The maximum daily wind speed =  
 16 Km/h and 21 Km/h.



Green mold & plants growing everywhere over the ruins of the temple.



## WATER SOURCE



Nandi Statue



SCALE : 1:100  
 ALL DRAWINGS ARE IN MM UNLESS MENTIONED

# ACCESSIBILITY



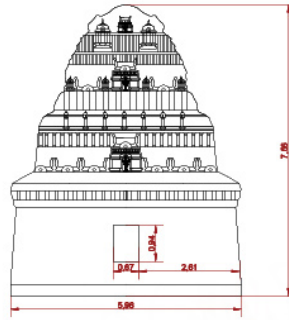
SHIVAN TEMPLE

group 09

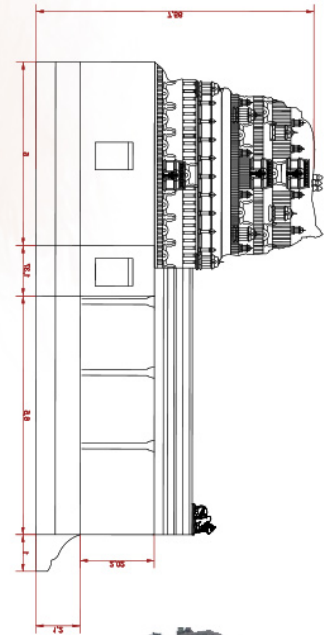
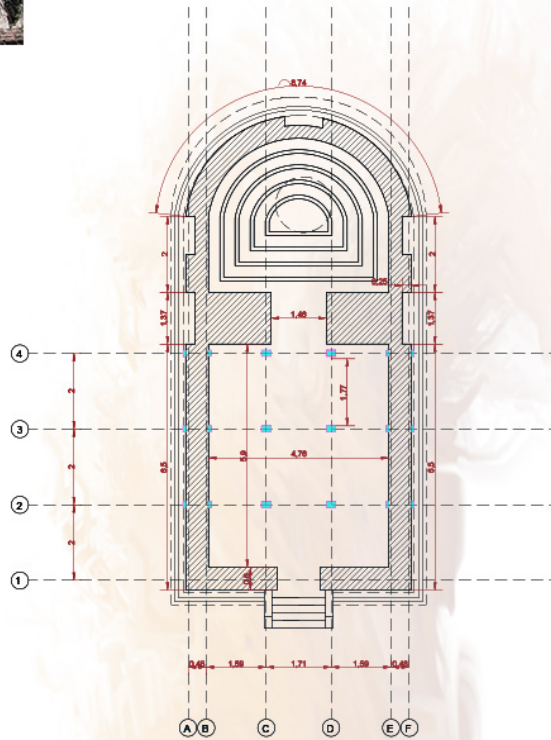
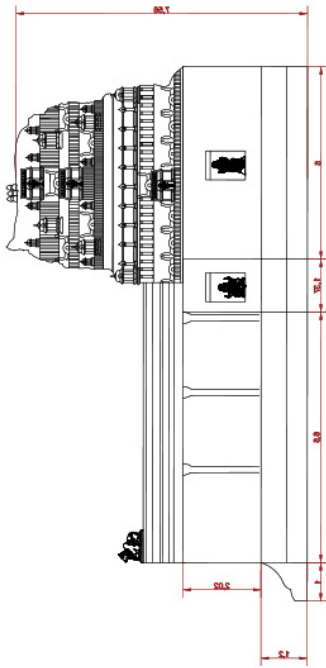
heritage documentation ROOHI AFREEN | LOHITH ROY | ROSHEL LAL | JEEVA KARTHICK  
 SHIVAN TEMPLE ELEVATION DETAIL



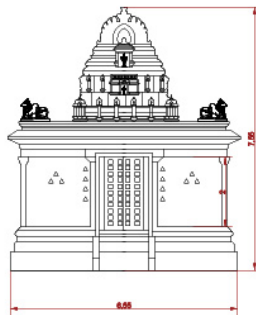
NORTH ELEVATION



WEST ELEVATION



EAST ELEVATION



SOUTH ELEVATION

SCALE : 1:100  
 ALL DRAWINGS ARE IN MM UNLESS MENTIONED

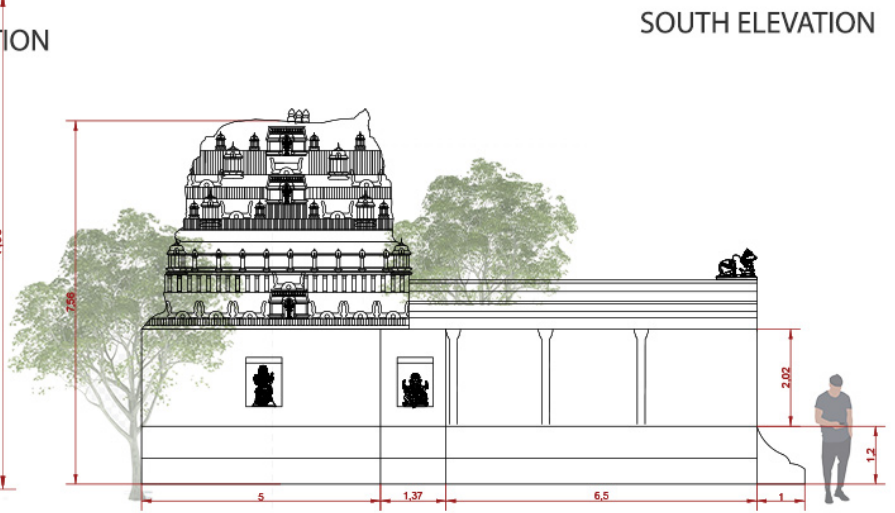
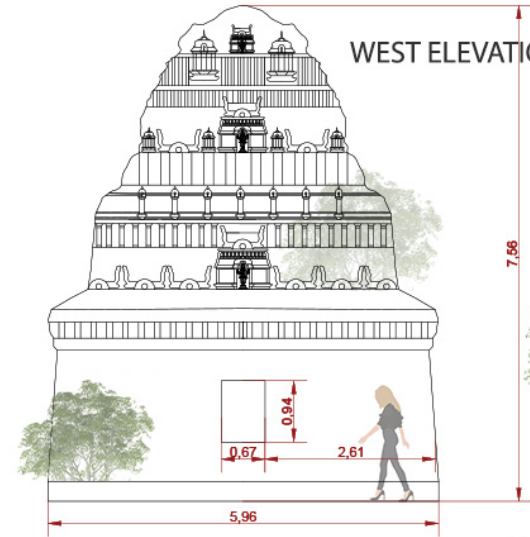
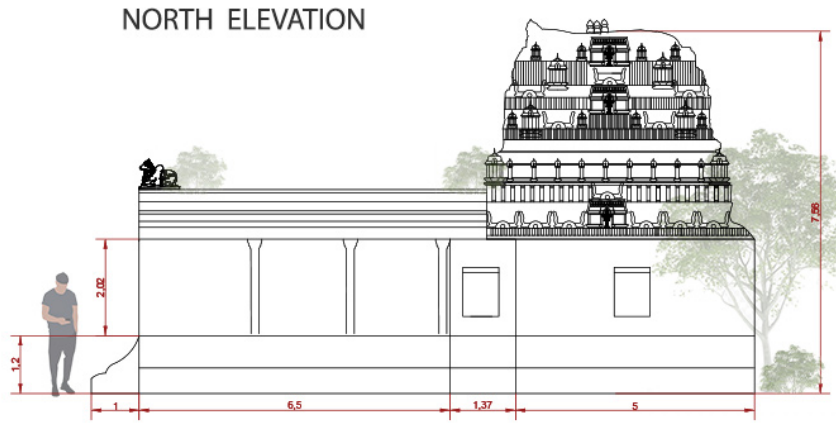
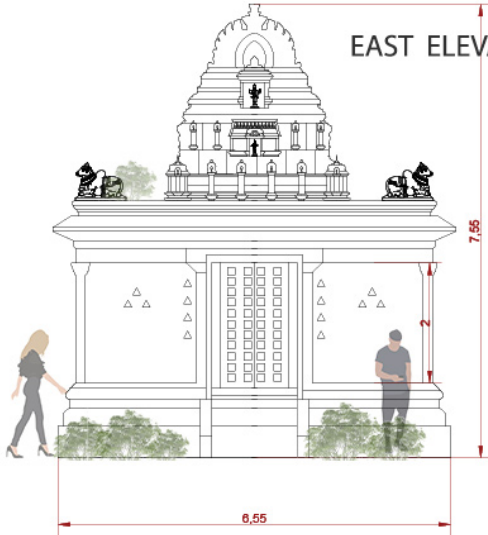
SHIVAN TEMPLE -ELEVATION DETAIL



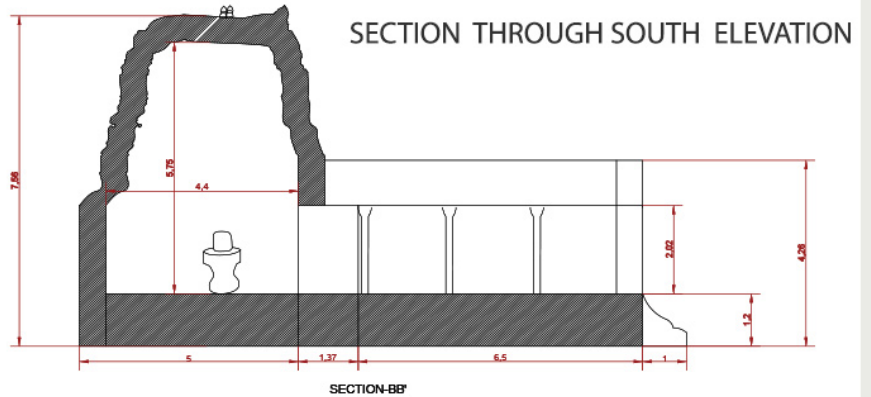
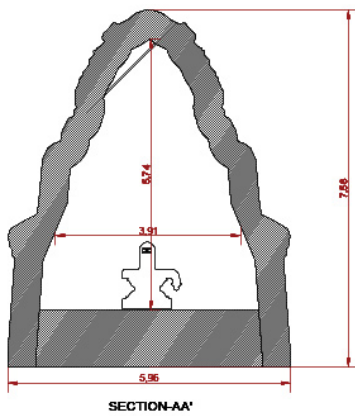
SHIVAN TEMPLE

group 09

heritage documentation ROOHI AFREEN | LOHITH ROY | ROSHEL LAL | JEEVA KARTHICK  
 SHIVAN TEMPLE ELEVATION DETAIL



SHIVAN TEMPLE SECTION DETAIL



SECTION THROUGH EAST ELEVATION

SCALE : 1:100  
 ALL DRAWINGS ARE IN MM UNLESS MENTIONED

SHIVAN TEMPLE -SECTION DETAIL

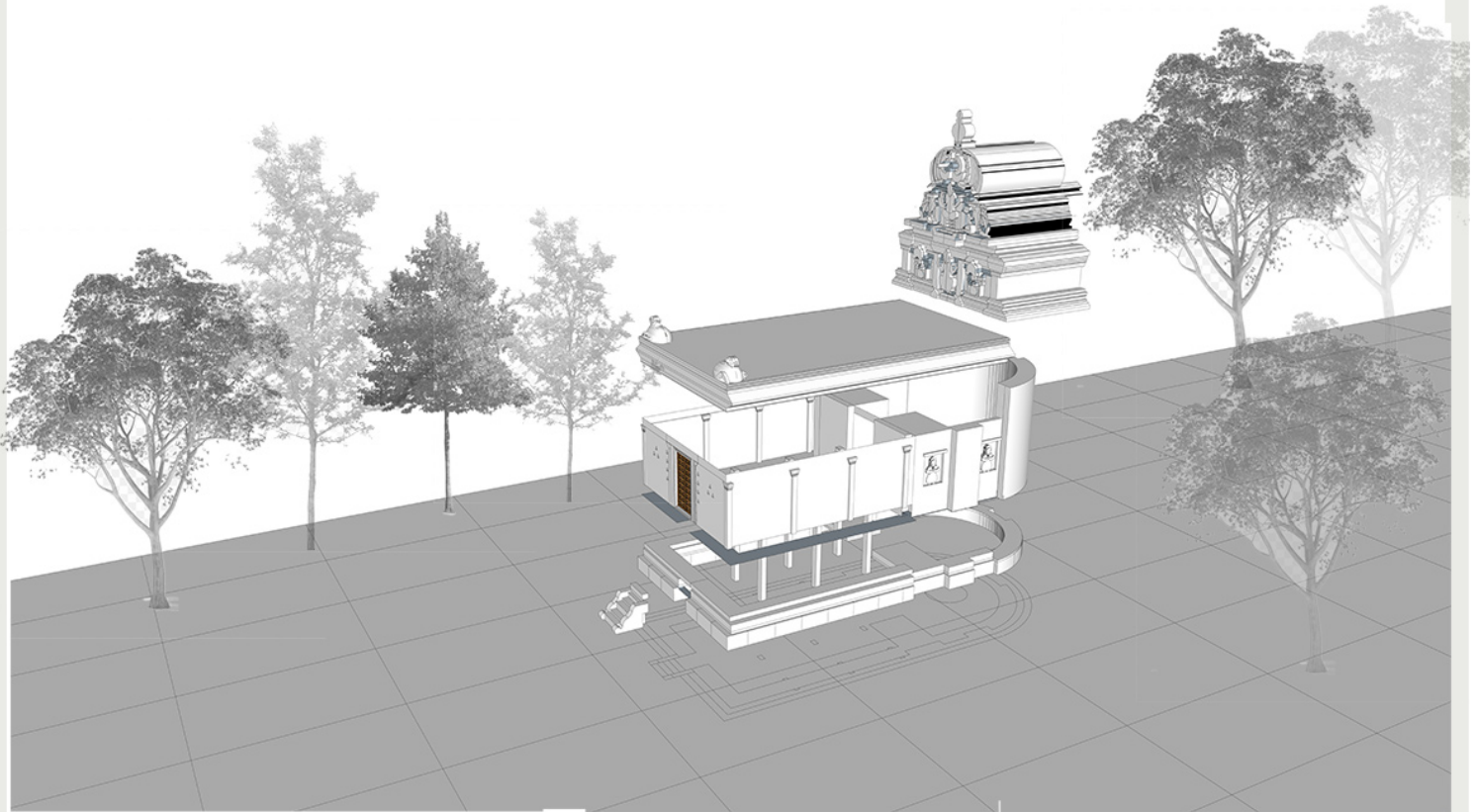


**SHIVAN TEMPLE**

group 09

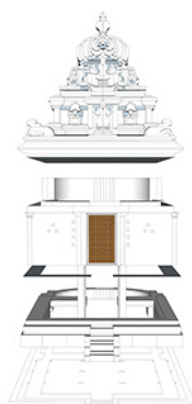
heritage documentation ROOHI AFREEN | LOHITH ROY | ROSHEL LAL | JEEVA KARTHICK

**SHIVAN TEMPLE ISOMETRIC VIEW**

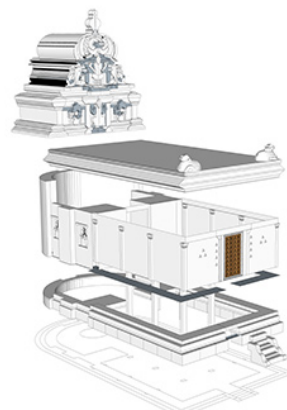


**VIEWS OF SHIVAN TEMPLE**

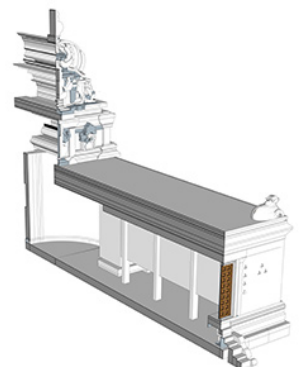
. The Cholas reconstructed a lot of brick temples into granite temples. Only few brick temples are found today in Tamil Nadu state of South India. Especially, there is hardly any brick temple that exists near Chennai city today. Hence, Vadavamuga Agneeswarar temple located in Vedal is a rare one.



EAST VIEW OF SHIVAN TEMPLE



VIEW OF SHIVAN TEMPLE



SECTION OF SHIVAN TEMPLE



SCALE : 1:100  
 ALL DRAWINGS ARE IN MM UNLESS MENTIONED

**SHIVAN TEMPLE ISOMETRIC VIEW**