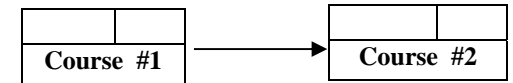
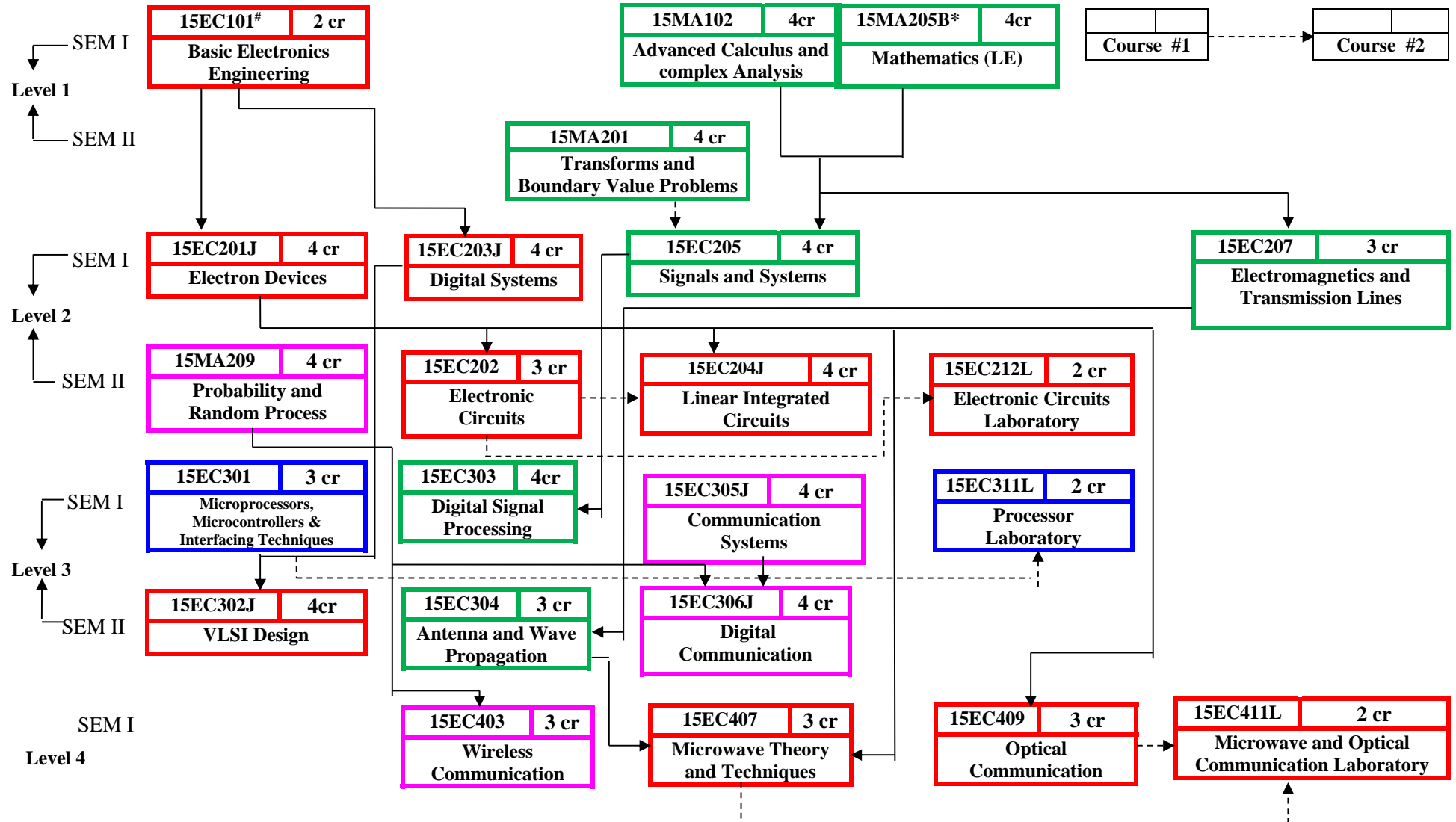
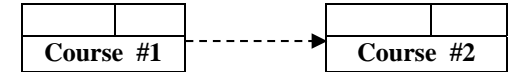


B.Tech - Electronics and Communication Engineering Pre-requisites and Co-requisites flow chart

Course #1 is a Pre-requisite for Course #2



Course #1 is a Co-requisite for Course #2



Department of Electronics and Communication Engineering			
B. Tech Electronics and Communication Engineering			
Course Code	Course Title	Prerequisite course	Co requisite courses
15EC201J	Electron Devices	15EC101 [#]	Nil
15EC203J	Digital Systems	15EC101 [#]	Nil
15EC205	Signals and Systems	15MA102 / 15MA205B [*]	15MA201
15EC207	Electromagnetics and Transmission Lines	15MA102	Nil
15EC202	Electronic Circuits	15EC201J	Nil
15EC204J	Linear Integrated Circuits	15EC201J / 15EE208	15EC202 [§]
15EC212L	Electronic Circuits Laboratory	Nil	15EC202
15EC303	Digital Signal Processing	15EC205	Nil
15EC311L	Processor Laboratory	Nil	15EC301
15EC302J	VLSI Design	15EC203J	Nil
15EC304	Antenna and Wave Propagation	15EC207	Nil
15EC306J	Digital Communication	15MA209,15EC305J	Nil
15EC403	Wireless Communication	15MA209	Nil
15EC407	Microwave Theory and Techniques	15EC201J,15EC304	Nil
15EC409	Optical Communication	15EC201J	Nil
15EC411L	Microwave and Optical Communication Laboratory	Nil	15EC407, 15EC409

As the lateral entry students have undergone equivalent courses in their diploma degree, they may be exempted from studying 15EC101 as a pre-requisite

* 15MA205B Mathematics (LE) is a pre-requisite course to 15EC205 & 15EC207 for lateral entry students, and 15MA205B is an equivalent to 15MA102

§ 15EC202 is a co-requisite for 15EC204J only for B.Tech (ECE) program